



NIKE TEAM SPORTS 2013/2014

# MEN'S BASKETBALL



**JUST  
DO  
IT.**   
**NIKETEAM.COM**





## **MEN'S BASKETBALL**

- 2 GAME THEATER
- 3 STOCK
- 12 DIGITAL
- 25 CUSTOM
- 30 CUSTOM ELITE
- 35 FOOTWEAR
- 36 EQUIPMENT
- 37 ACCESSORIES





553400 GT13 JACKET

\$75.00\*

SIZES: XS, S, M, L, XL, 2XL

ORDER DATE: 04/12/13

\*15% upcharge for 3XL, 4XL, LT, XLT, 2XLT, 3XLT, 4XLT

DELIVERY DATE: 09/20/13

Knit long-sleeve full-zip jacket. Contrast color insets across the shoulders and upper sleeve and third color insets underneath the arms and side panel. Front pockets and embroidered Swoosh design trademark at upper right chest. Body width: 23.25", Body length: 29" (size large). Tall body length: +2.375" (all sizes). Tall sleeve length: +2.375" (all sizes).

FABRIC: 100% polyester.

104 White/Black/Cardinal/(Cardinal)	106 White/Black/Scarlet/(Scarlet)	107 White/Navy/Scarlet/(Scarlet)
108 White/Black/Royal/(Royal)	109 White/Navy/Vegas Gold/(Vegas Gold)	110 White/Navy/Brt Gold/(Brt Gold)
111 White/Black/Dk Green/(Dk Green)	112 White/Black/Vegas Gold/(Vegas Gold)	113 White/Navy/Orange/(Orange)
114 White/Black/Brt Gold/(Brt Gold)	121 White/Black/Orange/(Orange)	123 White/Black/Anthracite/(Anthracite)
215 Anthracite/Black/Dk Green/(White)	216 Anthracite/Black/Navy/(White)	217 Anthracite/Black/Royal/(White)
219 Anthracite/Black/Purple/(White)	220 Anthracite/Black/Cardinal/(White)	222 Anthracite/Black/Scarlet/(White)
223 Anthracite/Black/White/(White)	423 Navy/Bright Gold/White/(White)	437 White/Navy/Anthracite/(Anthracite)

NEW DRI-FIT FUTURES ONLY

553399 GT13 PANT

\$65.00\*

SIZES: XS, S, M, L, XL, 2XL

ORDER DATE: 04/12/13

\*15% upcharge for 3XL, 4XL, LT, XLT, 2XLT, 3XLT, 4XLT

DELIVERY DATE: 09/20/13

Knit warm-up pant with contrast side panel, side seam pockets, elastic waistband with drawcord, leg zippers, and open bottom hem. Embroidered Swoosh design trademark at upper left thigh. Hip width: 23.25", Inseam length: 31" (size large). Tall inseam length: +2.375" (all sizes).

FABRIC: 100% polyester.

012 Black/White/Scarlet/(Scarlet)	014 Black/White/Royal/(Royal)	016 Black/White/Vegas Gold/(Vegas Gold)
017 Black/White/Brt Gold/(Brt Gold)	020 Black/White/Anthracite/(Anthracite)	022 Black/White/Cardinal/(Cardinal)
024 Black/White/Dk Green/(Dk Green)	031 Black/White/Orange/(Orange)	215 Anthracite/Black/Dk Green/(White)
216 Anthracite/Black/Navy/(White)	217 Anthracite/Black/Royal/(White)	219 Anthracite/Black/Purple/(White)
220 Anthracite/Black/Cardinal/(White)	222 Anthracite/Black/Scarlet/(White)	223 Anthracite/Black/White/(White)
421 Navy/White/Scarlet/(Scarlet)	422 Navy/White/Vegas Gold/(Vegas Gold)	423 Navy/White/Brt Gold/(Brt Gold)
436 Navy/White/Orange/(Orange)	437 Navy/White/Anthracite/(Anthracite)	

NEW DRI-FIT FUTURES ONLY





436634 | HYPER ELITE JERSEY

\$50.00

SIZES: S, M, L, XL, 2XL, 3XL

OFFER DATE: 09/01/11  
END DATE: 01/01/14

System of dress game uniform. Double knit fabrication. V-neck design. Contrast printed silicone striping down side panels. Contrast neck band. Nike Team Sports jock tag at lower left hem. Body width: 20.75, Body length: 31.25" (size large).

Part of Stock Embellishment Program.

FABRIC: Body: 100% recycled polyester. Collar: 92% polyester/8% spandex.

012 Black/White	104 White/Cardinal	106 White/Black
107 White/Navy	108 White/Royal	109 White/Scarlet
110 White/Purple	111 White/Dark Green	115 White/Dark Maroon
342 Dark Green/White	420 Navy/White	494 Royal/White
546 Purple/White	612 Cardinal/White	658 Scarlet/White
670 Dark Maroon/White		



436635 | HYPER ELITE SHORT

\$55.00

SIZES: S, M, L, XL, 2XL, 3XL

OFFER DATE: 09/01/11  
END DATE: 01/01/14

System of dress game short. Woven fabrication. 2" gripper elastic waistband with drawcord for adjustability. Contrast printed stripes and laser perforations on side for ultimate ventilation. Swoosh design trademark at lower left hip. Hip width: 25", Inseam length: 11.25" (size large).

FABRIC: Body: 100% recycled polyester.

012 Black/White/(White)	104 White/Cardinal/(Cardinal)	106 White/Black/(Black)
107 White/Navy/(Navy)	108 White/Royal/(Royal)	109 White/Scarlet/(Scarlet)
110 White/Purple/(Purple)	111 White/Dark Green/(Dark Green)	115 White/Dark Maroon/(Dark Maroon)
342 Dark Green/White/(White)	420 Navy/White/(White)	494 Royal/White/(White)
546 Purple/White/(White)	612 Cardinal/White/(White)	658 Scarlet/White/(White)
670 Dark Maroon/White/(White)		





553390

NIKE TEAM ENFERNO JERSEY

\$45.00

SIZES: S, M, L, XL, 2XL, 3XL

OFFER DATE: 09/01/13  
END DATE: 01/01/16

Dri-FIT sleeveless jersey with contrast arm band and neck band. Flatback mesh fabrication with open holed mesh back panel for enhanced breathability. Nike Team Sports jock tag at lower left hem. Body width: 20.75", Body length: 31.25" (size large).

Part of Stock Embellishment Program.

FABRIC: 100% polyester.

012 Black/White	104 White/Cardinal	106 White/Black
107 White/Navy	108 White/Royal	109 White/Scarlet
110 White/Purple	111 White/Dark Green	115 White/Dark Maroon
342 Dark Green/White	420 Navy/White	494 Royal/White
546 Purple/White	612 Cardinal/White	658 Scarlet/White
670 Dark Maroon/White		



553391

NIKE TEAM ENFERNO SHORT

\$45.00

SIZES: S, M, L, XL, 2XL, 3XL

OFFER DATE: 09/01/13  
END DATE: 01/01/16

Dri-FIT basketball short featuring flatback mesh fabrication with contrast side panel and hem binding. Elastic waistband with drawcord and embroidered swoosh design trademark at upper left hip. Hip width: 29.75", Inseam length: 11.25" (size large).

FABRIC: 100% polyester.

012 Black/White/(White)	104 White/Cardinal/(Cardinal)	106 White/Black/(Black)
107 White/Navy/(Navy)	108 White/Royal/(Royal)	109 White/Scarlet/(Scarlet)
110 White/Purple/(Purple)	111 White/Dark Green/(Dark Green)	115 White/Dark Maroon/(Dark Maroon)
342 Dark Green/White/(White)	420 Navy/White/(White)	494 Royal/White/(White)
546 Purple/White/(White)	612 Cardinal/White/(White)	658 Scarlet/White/(White)
670 Dark Maroon/White/(White)		





509144

BASELINE JERSEY

\$35.00

SIZES: XS, S, M, L, XL, 2XL, 3XL

OFFER DATE: 09/01/12  
END DATE: 01/01/15

Piqué jersey with flat-back mesh side panels featuring two-color taping down the seams of the side panel. Nike Team Sports jock tag at lower left hem. Body width: 20.75", Body length: 31.25" (size large).

Part of Stock Embellishment Program.  
Part of Response Program.

FABRIC: 100% polyester.

012 Black/White	104 White/Cardinal	106 White/Black
107 White/Navy	108 White/Royal	109 White/Scarlet
110 White/Purple	111 White/Dark Green	115 White/Dark Maroon
342 Dark Green/White	420 Navy/White	494 Royal/White
546 Purple/White	612 Cardinal/White	658 Scarlet/White
670 Dark Maroon/White		

Youth #553401 / S-XL / \$30.00 / Body width: 16.75", Body length: 25.25" (size medium)



509145

BASELINE SHORT

\$35.00

SIZES: XS, S, M, L, XL, 2XL, 3XL

OFFER DATE: 09/01/12  
END DATE: 01/01/15

Piqué short with flat-back mesh side panels featuring two-color taping down the side panel seams and across the lower side hem, elastic waistband, and drawcord. Swoosh design trademark at upper left hip. Hip width: 29.75", Inseam length: 11.25" (size large).

Part of Response Program.

FABRIC: 100% polyester.

012 Black/White/(White)	104 White/Cardinal/(Cardinal)	106 White/Black/(Black)
107 White/Navy/(Navy)	108 White/Royal/(Royal)	109 White/Scarlet/(Scarlet)
110 White/Purple/(Purple)	111 White/Dark Green/(Dark Green)	115 White/Dark Maroon/(Dark Maroon)
342 Dark Green/White/(White)	420 Navy/White/(White)	494 Royal/White/(White)
546 Purple/White/(White)	612 Cardinal/White/(White)	658 Scarlet/White/(White)
670 Dark Maroon/White/(White)		

Youth #553402 / S-XL / \$30.00 / Hip width: 21.5", Inseam length: 9.25" (size medium)





509142 | HUSTLE REVERSIBLE TANK

\$30.00

SIZES: S, M, L, XL, 2XL, 3XL, LT, XLT, 2XLT, 3XLT

OFFER DATE: 09/01/12  
END DATE: 09/01/15

Reversible mesh jersey. Nike Team Sports jock tag on lower left outer front and embroidered Swoosh design trademark at inner back yoke. Body width: 23.25", Body length: 30" (size large). Tall body length: +2.375" (all sizes).

FABRIC: Color: 100% nylon; White: 100% polyester.

012 Black/White/(Black)	342 Dark Green/White/(Dark Green)	420 Navy/White/(Navy)
494 Royal/White/(Royal)	546 Purple/White/(Purple)	610 Cardinal/White/(Cardinal)
658 Scarlet/White/(Scarlet)	670 Dark Maroon/White/(Dark Maroon)	

Youth #509143 / S-XL / \$28.00 / Body width: 17.5", Body length: 24" (size medium)



553403 | NIKE TEAM LEAGUE REVERSIBLE SHORT

\$35.00

SIZES: XS, S, M, L, XL, 2XL, 3XL

OFFER DATE: 09/01/13  
END DATE: 01/01/16

Dri-FIT reversible mesh short. Contrast side panel insets. Color with white insets reverses to white with color insets. Elastic waistband with drawcord. Swoosh design trademark at lower left hem. Hip width: 25", Inseam length: 11" (size large).

FABRIC: 100% polyester.

012 Black/White/(White)	342 Dark Green/White/(Dark Green)	420 Navy/White/(Navy)
494 Royal/White/(Royal)	546 Purple/White/(Purple)	612 Cardinal/White/(Cardinal)
658 Scarlet/White/(Scarlet)	670 Dark Maroon/White/(Dark Maroon)	

Youth #553406-012, 420, 494, 658 / S-XL / \$30.00 / Hip width: 20", Inseam length: 9" (size medium)

DRI-FIT Y



392949 | MEN'S HUSTLE GAME SHORT

\$28.00

SIZES: XS, S, M, L, XL, 2XL, 3XL

OFFER DATE: 09/01/10  
END DATE: 07/01/14

Warp knit tricot mesh short with contrast side seam and bottom hem. 2" waistband with drawcord. Embroidered Swoosh design trademark at lower left leg. Hip width: 25.75", Inseam length: 10.25" (size large).

FABRIC: 100% polyester.

012 Black/White/(White)	057 Grey/White/(White)	342 Dark Green/White/(White)
420 Navy/White/(White)	453 Light Blue/White/(White)	494 Royal/White/(White)
546 Purple/White/(White)	612 Cardinal/White/(White)	658 Scarlet/White/(White)
670 Dark Maroon/White/(White)	784 Vegas Gold/White/(White)	821 Orange/White/(White)





**436632 | L/S SHOOT AROUND II \$50.00**

**SIZES:** XS, S, M, L, XL, 2XL, 3XL, MT, LT, XLT, 2XLT, 3XLT **OFFER DATE:** 09/01/11  
**END DATE:** 01/01/14

Dri-FIT long-sleeve shooting shirt. Contrast color blocking on shoulders and rib knit fabrication on bottom of sleeve hems and neck band. Embroidered Swoosh design trademark at upper right chest. Body width: 24.5", Body length: 30.75" (size large). Tall body length: +2.375", Tall sleeve length: +2.375" (all sizes).

**FABRIC:** Body: 100% polyester.

100 White/White/(Black)	104 White/Cardinal/(Cardinal)	106 White/Black/(Black)
107 White/Navy/(Navy)	108 White/Royal/(Royal)	109 White/Scarlet/(Scarlet)
110 White/Purple/(Purple)	111 White/Dark Green/(Dark Green)	115 White/Dark Maroon/(Dark Maroon)

DRI - FIT



**436633 | TEAR AWAY PANT II \$65.00**

**SIZES:** XS, S, M, L, XL, 2XL, 3XL, MT, LT, XLT, 2XLT, 3XLT **OFFER DATE:** 09/01/11  
**END DATE:** 01/01/14

Dri-FIT knit snap tear away pant. Contrast set on taping down side panels and around bottom hem. Covered elastic waistband with draw cord for adjustability. Open bottom hem. Embroidered Swoosh design trademark at left leg. Hip width: 23.25", Inseam length: 31.75" (size large). Tall inseam length: +2.375" (all sizes).

**FABRIC:** 100% polyester.

012 Black/White/(White)	100 White/White/(Black)	342 Dark Green/White/(White)
420 Navy/White/(White)	494 Royal/White/(White)	546 Purple/White/(White)
612 Cardinal/White/(White)	658 Scarlet/White/(White)	670 Dark Maroon/White/(White)

DRI - FIT





553392

VICTORY S/S SHOOTING SHIRT

\$55.00

SIZES: XS, S, M, L, XL, 2XL, 3XL

OFFER DATE: 09/01/13  
END DATE: 01/01/16

Dri-FIT short-sleeve quarter-zip shooting shirt. Contrast mesh gussets underneath the arms and contrast zipper. Embroidered Swoosh design trademark at upper right chest and Nike Team Sports jock tag at lower left hem. Body width: 24.5", Body length: 31" (size large).

FABRIC: 100% polyester.

012 Black/White/(White)	100 White/White/(Black)	342 Dark Green/White/(White)
420 Navy/White/(White)	494 Royal/White/(White)	546 Purple/White/(White)
612 Cardinal/White/(White)	658 Scarlet/White/(White)	670 Dark Maroon/White/(White)

NEW DRI-FIT





509155

JORDAN WARM-UP JACKET

\$80.00

SIZES: XS, S, M, L, XL, 2XL, 3XL, 4XL, LT, XLT, 2XLT, 3XLT, 4XLT

OFFER DATE: 09/01/12  
END DATE: 09/01/15

Knit, full-zip, long-sleeve warm-up jacket featuring contrast color inset across the front chest and down the sleeves, zipper pockets, and jumpman design trademark logo at upper front left chest. Body width: 26.5", Body length: 30.25" (size large). Tall body length: +2.375" (all sizes). Tall sleeve length: +2.375" (all sizes).

FABRIC: 100% polyester.

012 Black/White/(White)	060 Anthracite/White/(White)	420 Navy/White/(White)
494 Royal/White/(White)	658 Scarlet/White/(White)	

DRI-FIT



509154

JORDAN WARM-UP PANT

\$75.00\*

SIZES: XS, S, M, L, XL, 2XL, 3XL, 4XL, LT, XLT, 2XLT, 3XLT, 4XLT

OFFER DATE: 09/01/12  
END DATE: 09/01/15

Knit, open bottom warm-up pant featuring contrast color inset down the side, zipper pockets, side leg zippers, and jumpman design trademark logo at left leg. Hip width: 24.25", Inseam length: 32.25" (size large). Tall inseam length: +2.375" (all sizes).

FABRIC: 100% polyester.

012 Black/White/(White)	060 Anthracite/White/(White)	420 Navy/White/(White)
494 Royal/White/(White)	658 Scarlet/White/(White)	

DRI-FIT



553404 | NIKE TEAM LEAGUE JACKET \$70.00

SIZES: XS, S, M, L, XL, 2XL, 3XL, 4XL, LT, XLT, 2XLT, 3XLT, 4XLT OFFER DATE: 09/01/13  
END DATE: 07/01/16

Dri-FIT long-sleeve full-zip knit jacket. Contrast insets across shoulder, down the sleeves, and on the side panel. Contrast zipper. Side pockets. Swoosh design trademark at upper left chest. Body width: 21.75", Body length: 27.5" (size large). Tall body length: +2.375" (all sizes). Tall sleeve length: +2.375" (all sizes).

FABRIC: 100% polyester.

020 Black/Anthracite/(White)	361 Dark Green/Anthracite/(White)	418 Navy/Anthracite/(White)
466 Royal/Anthracite/(White)	552 PurpleAnthracite/(White)	656 Scarlet/Anthracite/(White)
691 Dark Maroon/Anthracite/(White)	693 Cardinal/Anthracite/(White)	

NEW DRI-FIT



553405 | NIKE TEAM LEAGUE PANT \$60.00

SIZES: XS, S, M, L, XL, 2XL, 3XL, 4XL, LT, XLT, 2XLT, 3XLT, 4XLT OFFER DATE: 09/01/13  
END DATE: 07/01/16

Dri-FIT knit warm-up pant. Contrast inset on upper side panel. Leg zippers and elastic waistband with drawcord. Swoosh design trademark at upper left thigh. Hip width: 23.25", Inseam length: 31" (size large). Tall inseam length: +2.375" (all sizes).

FABRIC: 100% polyester.

020 Black/Anthracite/(White)	361 Dark Green/Anthracite/(White)	418 Navy/Anthracite/(White)
466 Royal/Anthracite/(White)	552 PurpleAnthracite/(White)	656 Scarlet/Anthracite/(White)
691 Dark Maroon/Anthracite/(White)	693 Cardinal/Anthracite/(White)	

NEW DRI-FIT



533561 | NPC HYPERSTRONG BASKETBALL SHORT 2.0 \$80.00

SIZES: S, M, L, XL, 2XL, 3XL, 4XL OFFER DATE: 09/01/12  
END DATE: 01/01/14

Hip width: 16.5", Inseam length: 8.75" (size large).

FABRIC: Body: Dri-FIT. 170g. 84% polyester/16% spandex. Gusset: Dri-FIT. 246g. 90% polyester/10% spandex.

010 Black/Cool Grey	100 White/Cool Grey
---------------------	---------------------





# STOCK EMBELLISHMENT PROGRAM

## FULL BLOCK font only



### Embellishment Color Options:



### Men's Basketball - 1 or 2 color

STYLE NUMBER	STYLE NAME	CATALOG PAGE #	LETTER HEIGHT	NUMBER HEIGHT FRONT/BACK	PRINT OPTIONS 1" EMBROIDERY OR PRINTED TEAM NAME	
436634	HYPER ELITE JERSEY	3	2½"	5"/8"	WILDCATS	
553390	NIKE TEAM ENFERNO JERSEY	4	2½"	5"/8"	10	10
509144	BASELINE JERSEY	5	2½"	5"/8"		
553401	BASELINE JERSEY – YOUTH	5	2"	4"/7"		

One-Color Screenprint – \$30

Two-Color Screenprint – \$40

509152 DQT DIAMOND PRESS JERSEY

\$85.00\*



SIZES: XS, S, M, L, XL, 2XL

OFFER DATE: AVAILABLE 365 DAYS/YEAR

\*15% upcharge for 3XL, 4XL, LT, XLT, 2XLT, 3XLT, 4XLT

Digitally printed and fully sublimated game jersey featuring contrast color designs down both side panels and on neck band. Aerographic mesh back panel helps keep this jersey lightweight and breathable during competition. Nike Team Sports jock tag at lower left hem. Body width: 20.75", Body length: 31.25" (size large). Tall body length: +2.375" (all sizes). NFHS approved.

**Exclusive order form required.**

FABRIC: 100% polyester.



365



509153 DQT DIAMOND PRESS SHORT

\$75.00\*



SIZES: XS, S, M, L, XL, 2XL

OFFER DATE: AVAILABLE 365 DAYS/YEAR

\*15% upcharge for 3XL, 4XL, LT, XLT, 2XLT, 3XLT, 4XLT

Digitally printed and fully sublimated game short featuring contrast color designs and team embellishment options down both sides. Elastic waistband and drawcord. Swoosh design trademark at upper left hip. +2" and +4" additional length option for size S-4XL. Hip width: 30", Inseam length: 11" (size large). Tall inseam length: +1.25" (size LT). NFHS approved.

**Exclusive order form required.**

FABRIC: 100% polyester.



365





350823 DQT GATOR GAME JERSEY

\$80.00\*



SIZES: XS, S, M, L, XL, 2XL

OFFER DATE: AVAILABLE 365 DAYS/YEAR

\*15% upcharge for 3XL, 4XL, LT, XLT, 2XLT, 3XLT, 4XLT

END DATE: 01/01/14

Fully sublimated lightweight performance V-neck game jersey. Contrast team color name across center front chest and straight printed side panel. Nike Team Sports jock tag at lower left hem. Body width: 20.75", Body length: 31.25" (size large), Tall Body length: +2.375". NFHS approved.

**Exclusive order form required.**

FABRIC: 100% polyester.



350824 DQT GATOR GAME SHORT

\$72.00\*



SIZES: XS, S, M, L, XL, 2XL

OFFER DATE: AVAILABLE 365 DAYS/YEAR

\*15% upcharge for 3XL, 4XL, LT, XLT, 2XLT, 3XLT, 4XLT

END DATE: 01/01/14

Fully sublimated lightweight performance game short. Drawcord waistband and contrast team color side panel inset with no side-seam. Swoosh design trademark at lower left hip. +2" and +4" additional length option for size S-4XL. Hip width: 30" (size large), Inseam length: 11" (all sizes), Tall Inseam length: +1.25" (all sizes). NFHS approved. **Exclusive order form required.**

FABRIC: 100% polyester.



HYPER ELITE 3.0 JERSEY

See below\*



SIZES: S, M, L, XL, 2XL  
\*15% upcharge for 3XL, LT, XLT, 2XLT, 3XLT

OFFER DATE: 09/01/12  
END DATE: 01/01/15

The pinnacle jersey in the Nike team basketball line, inspired by Olympic designs. Fully sublimated lightweight flatback mesh fabrication and aerographic engineered mesh back panel keep this jersey light and breathable during competition. Contrast color side panels and back shoulder panel. Available with fully sublimated or twill embellishment options. Nike Team Sports jock tag at lower left hem. Body width: 20.75", Body length: 31.25" (size large). Tall body length: +2.375" (all sizes). NFHS approved.

FABRIC: 100% polyester.

509146	Sublimated Jersey with Sublimated Name and Number	\$70.00*
532630	Sublimated Jersey with One-Color Lightweight Stretch Twill	\$126.00*
532629	Sublimated Jersey with Sublimated Lightweight Stretch Twill	\$130.00*

DRI-FIT



HYPER ELITE 3.0 SHORT

See below\*



SIZES: S, M, L, XL, 2XL  
\*15% upcharge for 3XL, LT, XLT, 2XLT, 3XLT

OFFER DATE: 09/01/12  
END DATE: 01/01/15

The pinnacle short in the Nike team basketball line, inspired by Olympic designs. Fully sublimated lightweight woven fabrication and laser perforations keep this short light and breathable during competition. Contrast color side panels and option for contrast front to back look. Swoosh design trademark at upper left hip. Hip width: 25", Inseam length: 11.25" (size large). Tall inseam length: +1.25" (all sizes). NFHS approved.

FABRIC: 100% polyester.

509147	Blank	\$75.00*
--------	-------	----------

DRI-FIT





436638 HYPER ELITE 2.0 JERSEY

\$65.00\*



SIZES: S, M, L, XL, 2XL  
\*15% upcharge for 3XL, LT, XLT, 2XLT, 3XLT

OFFER DATE: 09/01/11  
END DATE: 01/01/14

Be at your best on court with this system of dress elite fit game jersey. Fully sublimated lightweight flatback mesh material help make this uniform lightweight. A unique aerographic engineered mesh on the back panel of this style provide breathability for the athlete during competition. V-neck design. Contrast neck band and contrast striping on top of the shoulders. Nike Team Sports jock tag at lower left hem. Body width: 20.75", Body length: 31.25" (size large). Tall body length: +2.375" (all sizes). NFHS approved.

FABRIC: 100% polyester.



436639 HYPER ELITE 2.0 SHORT

\$75.00\*



SIZES: S, M, L, XL, 2XL  
\*15% upcharge for 3XL, LT, XLT, 2XLT, 3XLT

OFFER DATE: 09/01/11  
END DATE: 01/01/14

System of dress elite game short. Fully sublimated, lightweight woven fabrication with laser perforated side panels elevate this short for ultimate breathability and performance. 2" gripper elastic draw cord waistband for adjustability. Ability to contrast team colors on side panels and option for one letter team customization on lower right side panel. Embroidered Swoosh design trademark at upper left hip. Hip width: 25", Inseam length: 11.25" (size large). Tall inseam length: +1" (all sizes).

FABRIC: 100% polyester.



553396 NIKE TEAM DEVASTATE JERSEY

\$65.00\*



SIZES: S, M, L, XL, 2XL

OFFER DATE: 09/01/13

\*15% upcharge for 3XL, LT, XLT, 2XLT, 3XLT

END DATE: 01/01/16

Inspired by one of Nike Basketball's most iconic designs, this jersey features a Dri-FIT knit and mesh combination body fabric with an aerographic mesh back panel for enhanced breathability. Contrast color side panel, arm band, and neck band options. Nike Team Sports jock tag at lower left hem. Body width: 20.75", Body length: 31.25" (size large). Tall body length: +2.375" (all sizes).

FABRIC: 100% polyester.

NEW DRI-FIT



553397 NIKE TEAM DEVASTATE SHORT

\$65.00\*



SIZES: S, M, L, XL, 2XL

OFFER DATE: 09/01/13

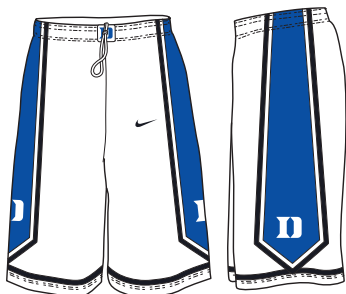
\*15% upcharge for 3XL, LT, XLT, 2XLT, 3XLT

END DATE: 01/01/16

Inspired by one of Nike Basketball's most iconic designs, this short features a Dri-FIT woven fabrication and contrast color side panel and hem graphic detail. Letter and number option on side panel. Elastic waistband with drawcord. Swoosh design trademark at upper left hip. Hip width: 25", Inseam length: 11.25" (size large). Tall inseam length: +1.25" (all sizes).

FABRIC: 100% polyester.

NEW DRI-FIT





553393 NIKE TEAM IGNITION JERSEY

\$60.00\*



SIZES: S, M, L, XL, 2XL

OFFER DATE: 09/01/13

\*15% upcharge for 3XL, LT, XLT, 2XLT, 3XLT

END DATE: 01/01/16

Fully sublimated performance game jersey. Dri-FIT piqué and mesh combination body fabric with optional tonal back panel graphic. Center chest large single letter name layout available. Nike Team Sports jock tag at lower left hem. Body width: 20.75", Body length: 31.25" (size large). Tall body length: +2.375" (all sizes).

FABRIC: 100% polyester.

NEW DRI-FIT



553394 NIKE TEAM IGNITION SHORT

\$60.00\*



SIZES: S, M, L, XL, 2XL

OFFER DATE: 09/01/13

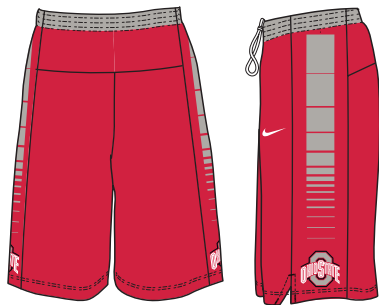
\*15% upcharge for 3XL, LT, XLT, 2XLT, 3XLT

END DATE: 01/01/16

Fully sublimated performance game short. Dri-FIT piqué and mesh combination fabric featuring optional waistband and side panel graphic color contrast. Elastic waistband and drawcord. Swoosh design trademark at front left hip. Hip width: 29.75", Inseam length: 11.25" (size large). Tall inseam length: +1.25" (all sizes).

FABRIC: 100% polyester.

NEW DRI-FIT



TEAM ID PLUS GAME JERSEY

See below\*



SIZES: XS, S, M, L, XL, 2XL  
\*15% upcharge for 3XL, LT, XLT, 2XLT, 3XLT

OFFER DATE: 09/01/11  
END DATE: 01/01/15

System of dress elite game jersey. Combination of piqué and flat back mesh fabrication create a lightweight and breathable jersey. Fully sublimated v-neck design, tailored fit, engineered mesh side panel with ability for team color customization. Nike Team Sports jock tag at lower left hem. Body width: 20.75", Body length: 31.25" (size large). Tall body length: +2.375" (all sizes).

FABRIC: 100% polyester.

436636 XX3 Design \$60.00\*



TEAM ID PLUS GAME SHORT

See below\*



SIZES: XS, S, M, L, XL, 2XL  
\*15% upcharge for 3XL, LT, XLT, 2XLT, 3XLT

OFFER DATE: 09/01/11  
END DATE: 01/01/15

System of dress elite game short. Combination of piqué and flat back mesh make this short breathable and lightweight. Fully sublimated engineered mesh shorts which allow the ability to customize with team colors. 2" gripper elastic waistband with drawcord for adjustability. Embroidered Jumpman logo design trademark at left hip. Hip width: 29.75", Inseam length: 11.25" (size large). Tall inseam length: +1" (all sizes).

FABRIC: 100% polyester.

436637 XX3 Design \$60.00\*





553395 | DIGITAL JORDAN SHOOTING SHIRT

\$90.00\*



SIZES: XS, S, M, L, XL, 2XL

OFFER DATE: 09/01/13

\*15% upcharge for 3XL, LT, XLT, 2XLT, 3XLT

END DATE: 01/01/16

Long-sleeve shooting shirt. Piqué body fabrication and crew silhouette. Selectable pattern design underneath the arms and on the sleeves. Sublimated jumpman design trademark at upper left chest. Jordan jock tag at lower left hem. Body width: 24.5", Body length: 30.75" (size large). Tall body length: +2.375" (all sizes). Tall sleeve length: +2.375" (all sizes).

FABRIC: 100% polyester.

NEW



526615 TEAM ID III GAME JERSEY

\$45.00\*



SIZES: XS, S, M, L, XL, 2XL

OFFER DATE: 09/01/12

\*15% upcharge for 3XL, LT, XLT, 2XLT, 3XLT

END DATE: 01/01/15

Lightweight, fully sublimated, performance game jersey. Contrast color design details across shoulder panels and on neck band. Nike Team Sports jock tag at lower left hem. Body width: 24", Body length: 29.5" (size large). Tall body length: +2.375" (all sizes).

FABRIC: 100% polyester.

Youth #531471 / S-XL / \$40.00 / Body width: 17.5", Body length: 25" (size medium)



526614 TEAM ID III GAME SHORT

\$45.00\*



SIZES: XS, S, M, L, XL, 2XL

OFFER DATE: 09/01/12

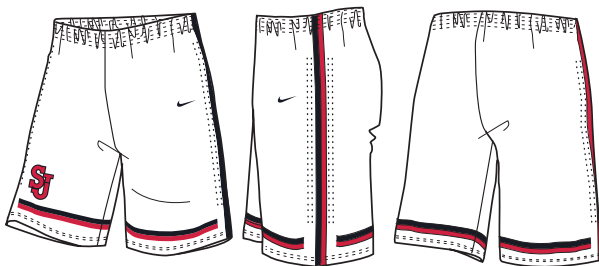
\*15% upcharge for 3XL, LT, XLT, 2XLT, 3XLT

END DATE: 01/01/15

Lightweight, fully sublimated, performance game short. Contrast color design details down both sides and at hem. Elastic waistband and drawcord. Swoosh design trademark at front left hip. Hip width: 25.5", Inseam length: 11" (size large). Tall inseam length: +1.25" (all sizes).

FABRIC: 100% polyester.

Youth #531472 / S-XL / \$40.00 / Hip width: 20.25", Inseam length: 8" (size medium)





TEAM ID GAME JERSEY

See below\*



SIZES: XS, S, M, L, XL, 2XL  
\*15% upcharge for 3XL, LT, XLT, 2XLT, 3XLT

OFFER DATE: 09/01/09  
END DATE: 01/01/14

Lightweight, fully sublimated performance jersey, uniquely printed Nike team design. Flat-seam construction. Striped V-neck and arm rib. Set-in side-panel. Nike Team Sports jock tag lower left hem. Body width: 24", Body length: 29.5" (size large). Tall body length: +2.375" (all sizes). NFHS approved.

FABRIC: 100% polyester.

356867	Baton Rouge Design	\$45.00*
356867	Zag Design	\$45.00*
214453	Motion Design	\$45.00*



Baton Rouge Design



TEAM ID GAME SHORT

See below\*

SIZES: XS, S, M, L, XL, 2XL  
\*15% upcharge for 3XL, LT, XLT, 2XLT, 3XLT

OFFER DATE: 09/01/06  
END DATE: 01/01/14

Lightweight, fully sublimated single-panel short. Drawcord waistband. No side seam. Contrast Swoosh design trademark on lower left hip. Hip width: 25.5", Inseam: 9" inseam (size large). Tall inseam length: 11" (size LT). NFHS approved.

FABRIC: 100% polyester.

214454	Baton Rouge Design	\$45.00*
214454	Zag Design	\$45.00*
214454	Motion Design	\$45.00*



Zag Design



Motion Design



**519861 | PINNACLE MESH RECRUIT 2.0 JERSEY**

**\$80.00\***



**SIZES:** XS, S, M, L, XL, 2XL

**OFFER DATE:** 12/01/12

\*15% upcharge for 3XL, 4XL, LT, XLT, 2XLT, 3XLT, 4XLT

**END DATE:** 04/01/15

Fully sublimated double knit mesh reversible jersey. Nike Team Sports jock tag at lower left hem. Optional sublimated Swoosh design trademark at upper right chest. Body width: 24", Body length: 31.25" (size large). Tall body length: +2.375" (all sizes).

**FABRIC:** 100% polyester Dri-FIT flat back mesh.

Youth #519863 / XS-XL / \$75.00 / Body width: 17.5", Body length: 25" (size medium)

DRI-FIT



**519860 | PINNACLE MESH RECRUIT 2.0 SHORT**

**\$80.00\***



**SIZES:** XS, S, M, L, XL, 2XL

**OFFER DATE:** 12/01/12

\*15% upcharge for 3XL, 4XL, LT, XLT, 2XLT, 3XLT, 4XLT

**END DATE:** 04/01/15

Fully sublimated reversible double-knit mesh short. Elastic waistband with drawcord for adjustability and comfort. Sublimated Swoosh design trademark at upper left hip. Hip width: 25", Inseam length: 11.25" (size large), Tall inseam length: 1.25" (all sizes).

**FABRIC:** 100% polyester Dri-FIT flat back mesh.

Youth #519862 / XS-XL / \$75.00 / Hip width: 20", Inseam length: 9.25" (size medium)

DRI-FIT





**509149 | PINNACLE MESH 3.0 JERSEY**

**\$65.00\***



**SIZES:** XS, S, M, L, XL, 2XL

**OFFER DATE:** 09/01/12

\*15% upcharge for 3XL, 4XL, LT, XLT, 2XLT, 3XLT, 4XLT

**END DATE:** 01/01/15

Pinnacle mesh provides the latest in single layer technology for optimal practice performance. Dri-FIT fabric reversible single-layer mesh jersey. Two fully sublimated design graphic options on the front accomodating a full team name or single letter graphic. Back features tonal net graphic pattern and number. Swoosh design trademark at center front. Nike Team Sports jock tag at lower left hem. Body width: 24", Body length: 29.5" (size large). Tall body length: +2.375" (all sizes).

**FABRIC:** 100% polyester.

DRI-FIT



**509148 | PINNACLE MESH 3.0 SHORT**

**\$50.00\***



**SIZES:** XS, S, M, L, XL, 2XL

**OFFER DATE:** 09/01/12

\*15% upcharge for 3XL, 4XL, LT, XLT, 2XLT, 3XLT, 4XLT

**END DATE:** 01/01/15

Fully sublimated Dri-FIT fabric pinnacle mesh short featuring contrast color down the side panels and at hem, tonal net design graphic on both side panels, and Swoosh design trademark at lower left side panel. Hip width: 25", Inseam length: 11" (size large). Tall inseam length: +1.25" (all sizes).

**FABRIC:** 100% polyester.

DRI-FIT



## DIGITAL UNIFORM OPTIONS



### COLOR OPTIONS



### LETTER FONT OPTIONS: Height will vary based on team name.

Full Block – 1 or 2 color – (Also available in Condensed version)

ABCDEFGHIJKLMNOPQRSTUVWXYZ

Athletic Shadow – 2 color only

ABCDEFGHIJKLMNOPQRSTUVWXYZ

Bureau – 1 or 2 color

ABCDEFGHIJKLMNOPQRSTUVWXYZ

Cougars – 1 or 2 color – (Not available in Arched or Vertical Arched)

ABCDEFGHIJKLMNOPQRSTUVWXYZ

Dade Bold – 1 or 2 color

ABCDEFGHIJKLMNOPQRSTUVWXYZ

FB Rush – 1 or 2 color

ABCDEFGHIJKLMNOPQRSTUVWXYZ

Glades Bold – 1 or 2 color

ABCDEFGHIJKLMNOPQRSTUVWXYZ

### NUMBER FONT OPTIONS: Height will vary by style.

Full Block – 1 or 2 color

1234567890

Athletic Shadow – 2 color only

1234567890

Bureau – 1 or 2 color

1234567890

Cougars – 1 or 2 color – (Not available in Arched or Vertical Arched)

0123456789

Dade Bold – 1 or 2 color

1234567890

FB Rush – 1 or 2 color

1234567890

Glades Bold – 1 or 2 color

1234567890

Ithaca – 1 or 2 color

1234567890

Kansas – 1 or 2 color

1234567890

Michigan State – 1 or 2 color

1234567890

Ithaca – 1 or 2 color

ABCDEFGHIJKLMNOPQRSTUVWXYZ

Kansas – 1 or 2 color

ABCDEFGHIJKLMNOPQRSTUVWXYZ

Michigan State – 1 or 2 color

ABCDEFGHIJKLMNOPQRSTUVWXYZ

Tuscon Bold – 1 or 2 color – (Also available in Condensed version)

ABCDEFGHIJKLMNOPQRSTUVWXYZ

Boulder Bold – 1 or 2 color

ABCDEFGHIJKLMNOPQRSTUVWXYZ

Script – 1 or 2 color

ABCDEFGHIJKLMNOPQRSTUVWXYZ

Script Lower Case – 1 or 2 color

abcdefghijklmnopqrstuvwxyz

Tuscon Bold – 1 or 2 color

1234567890

Morgantown – 1 or 2 color

1234567890

Boulder Bold – 3 color only

1234567890

Blacksburg – 3 color only

1234567890

Gridiron – 3 color only

1234567890

Post embellishment is not recommended with digitally printed styles.



GEORGETOWN GAME JERSEY

See below\*



SIZES: XS, S, M, L, XL, 2XL  
\*15% upcharge for 3XL, LT, XLT, 2XLT, 3XLT

OFFER DATE: 09/01/10  
END DATE: 01/01/14

“System of Dress” uniform. V-neck tailored fit including flat-back mesh for a smooth and breathable feel. Unique tonal kinta print design on neck and arm cuff. Nike Team Sports jock tag on lower left hem. Body width: 20.75”, Body length: 31.25” (size large). Tall body length: +2.375” (all sizes). NFHS approved.

FABRIC: 100% polyester.

392920	Blank	\$75.00*
359555	One-Color Screen Print	\$105.00*
359556	Two-Color Screen Print	\$115.00*
330089	One-Color Standard Twill	\$105.00*
330090	Two-Color Standard Twill	\$115.00*
409640	Three-Color Standard Twill	\$125.00*
409637	One-Color Lightweight Stretch Twill	\$115.00*
409638	Two-Color Lightweight Stretch Twill	\$125.00*
409639	Three-Color Lightweight Stretch Twill	\$135.00*
456533	Sublimated Standard Twill Hoops/Lax	\$115.00*
456047	Sublimated Lightweight Standard Twill Hoops/Lax	\$125.00*

DRI-FIT



GEORGETOWN GAME SHORT

See below\*



SIZES: XS, S, M, L, XL, 2XL  
\*15% upcharge for 3XL, LT, XLT, 2XLT, 3XLT

OFFER DATE: 09/01/10  
END DATE: 01/01/14

“System of Dress” uniform. Flat-back mesh with exposed gripper elastic waistband and draw-cord for easy adjustability. Unique tonal kinta design on center front waistband, taping and bottom hem. Jumpman design trademark at upper left hip. Optional 1” direct embroidery team name on lower left hem. Hip width: 29.75”, Inseam length: 11” (size large). Tall inseam length: +1” (all sizes). NFHS approved.

FABRIC: 100% polyester.

392921	Blank	\$70.00*
394875	1” Embroidery	\$80.00*

DRI-FIT



FADEAWAY GAME JERSEY

See below\*

SIZES: XS, S, M, L, XL, 2XL  
\*15% upcharge for 3XL, 4XL, LT, XLT, 2XLT, 3XLT, 4XLT

OFFER DATE: 09/01/12  
END DATE: 01/01/15

Dri-FIT knit game jersey featuring contrast color detailing at shoulder and contrast color neckband. Aerographic engineered mesh back panel keeps this jersey lightweight and breathable during competition. Nike Team Sports jock tag at lower left hem. Body width: 20.75", Body length: 31.25" (size large). Tall body length: +2.375" (all sizes).

FABRIC: 100% polyester.

509151	Blank	\$60.00*
359555	One-Color Screen Print	\$90.00*
359556	Two-Color Screen Print	\$100.00*
330089	One-Color Standard Twill	\$90.00*
330090	Two-Color Standard Twill	\$100.00*
409640	Three-Color Standard Twill	\$110.00*
409637	One-Color Lightweight Stretch Twill	\$100.00*
409638	Two-Color Lightweight Stretch Twill	\$110.00*
409639	Three-Color Lightweight Stretch Twill	\$120.00*
456533	Sublimated Standard Twill Hoops/Lax	\$100.00*
456047	Sublimated Lightweight Standard Twill Hoops/Lax	\$110.00*

DRI-FIT 



FADEAWAY GAME SHORT

See below\*

SIZES: S, M, L, XL, 2XL  
\*15% upcharge for 3XL, 4XL, LT, XLT, 2XLT, 3XLT, 4XLT

OFFER DATE: 09/01/12  
END DATE: 01/01/15

Dri-FIT knit game short featuring contrast color design details at side panels and hem. Team name option on left side panel and contrast color belt buckle option. Swoosh design trademark at upper left hip. Hip width: 29.75", Inseam length: 11.25" (size large). Tall inseam length: +1.25" (all sizes).

FABRIC: 100% polyester.

509150	Blank	\$60.00*
531989	One-Color 2" Short Lightweight Twill	\$80.00*
531990	One-Color 2" Short Standard Twill	\$75.00*
531991	Sublimated Standard Twill	\$70.00*
531992	Sublimated Lightweight Standard Twill	\$75.00*
531993	One-Color 2" Short Screenprint	\$70.00*
531994	Two-Color 2" Short Screenprint	\$75.00*

DRI-FIT 





SHOT CLOCK L/S SHOOTING SHIRT

See below\*



**SIZES:** S, M, L, XL, 2XL  
**OFFER DATE:** 09/01/13  
\*15% upcharge for 3XL, 4XL, LT, XLT, 2XLT, 3XLT  
**END DATE:** 01/01/16

Dri-FIT long-sleeve shooting shirt. Quarter-zip silhouette with piqué body fabric and mesh insets underneath the arms. Embroidered Swoosh design trademark at upper right chest. Nike Team Sports jock tag at lower left hem. Body width: 24.5", Body length: 30.75" (size large). Tall body length: +2.375" (all sizes). Tall sleeve length: +2.375" (all sizes).

**FABRIC:** 100% polyester.

553398	Blank	\$70.00*
Front Left Chest		
409643	One-Color Standard Twill	\$5.00*
409644	Two-Color Standard Twill	\$8.00*
531982	One-Color Lightweight Twill	\$8.00*
531983	Two-Color Lightweight Twill	\$12.00*
418812	1" Embroidery	\$10.00*
Back		
599333	One-Color Standard Twill	\$15.00*
599334	Two-Color Standard Twill	\$20.00*
599335	One-Color Lightweight Twill	\$20.00*
599336	Two-Color Lightweight Twill	\$25.00*

**NEW** DRI-FIT



VICTORY SHOOTING SHIRT

See below\*



**SIZES:** XS, S, M, L, XL, 2XL  
**OFFER DATE:** 09/01/12  
**END DATE:** 01/01/15

\*15% upcharge for 3XL, 4XL, LT, XLT, 2XLT, 3XLT, 4XLT  
Dri-FIT knit shooting shirt inspired by olympic designs. Featuring contrast side panels and quarter-zip silhouette. Swoosh design trademark at upper right chest. Nike Team Sports jock tag at lower left hem. Body width: 24.5", Body length: 31" (size large). Tall body length: +2.375" (all sizes). Tall sleeve length: +1.25" (all sizes).

**FABRIC:** 100% polyester.

509156	Blank	\$70.00*
409643	One-Color Twill (2" letters, 1-3 letters)	\$72.00*
409644	Two-Color Twill (2" letters, 1-3 letters)	\$73.00*
518148	Two-Color Sublimated Lightweight Stretch Twill	\$74.00*
418812	1" Embroidery	\$80.00*

DRI-FIT



## CUSTOM UNIFORM OPTIONS



### COLOR OPTIONS



### EMBELLISHMENT COLOR OPTIONS \*Sublimated Lightweight Stretch Twill and Embroidery only.



### LETTER FONT OPTIONS: Height will vary based on team name.

Full Block – 1 or 2 color – (Also available in Condensed version)

ABCDEFGHIJKLMNOPQRSTUVWXYZ

Athletic Shadow – 2 color only

ABCDEFGHIJKLMNOPQRSTUVWXYZ

Bureau – 1 or 2 color

ABCDEFGHIJKLMNOPQRSTUVWXYZ

Cougars – 1 or 2 color – (Not available in Arched or Vertical Arched)

ABCDEFGHIJKLMNOPQRSTUVWXYZ

Dade Bold – 1 or 2 color

ABCDEFGHIJKLMNOPQRSTUVWXYZ

FB Rush – 1 or 2 color

ABCDEFGHIJKLMNOPQRSTUVWXYZ

Glades Bold – 1 or 2 color

ABCDEFGHIJKLMNOPQRSTUVWXYZ

### NUMBER FONT OPTIONS: Height will vary by style.

Full Block – 1 or 2 color

1234567890

Athletic Shadow – 2 color only

1234567890

Bureau – 1 or 2 color

1234567890

Cougars – 1 or 2 color – (Not available in Arched or Vertical Arched)

0123456789

Dade Bold – 1 or 2 color

1234567890

FB Rush – 1 or 2 color

1234567890

Glades Bold – 1 or 2 color

1234567890

Ithaca – 1 or 2 color

1234567890

Kansas – 1 or 2 color

1234567890

Michigan State – 1 or 2 color

1234567890

Ithaca – 1 or 2 color

ABCDEFGHIJKLMNOPQRSTUVWXYZ

Kansas – 1 or 2 color

ABCDEFGHIJKLMNOPQRSTUVWXYZ

Michigan State – 1 or 2 color

ABCDEFGHIJKLMNOPQRSTUVWXYZ

Tuscon Bold – 1 or 2 color – (Also available in Condensed version)

ABCDEFGHIJKLMNOPQRSTUVWXYZ

Boulder Bold – 1 or 2 color

ABCDEFGHIJKLMNOPQRSTUVWXYZ

Script – 1 or 2 color

ABCDEFGHIJKLMNOPQRSTUVWXYZ

Script Lower Case – 1 or 2 color

abcdefghijklmnopqrstuvwxyz

Tuscon Bold – 1 or 2 color

1234567890

Morgantown – 1 or 2 color

1234567890

Boulder Bold – 3 color only

1234567890

Blacksburg – 3 color only

1234567890

Gridiron – 3 color only

1234567890

### EMBELLISHMENT OPTIONS

- One-Color Screen Print — \$30
- Two-Color Screen Print — \$40
- One-Color Standard Twill — \$30
- Two-Color Standard Twill — \$40
- One-Color Lightweight Stretch Twill — \$40
- Two-Color Lightweight Stretch Twill — \$50
- Sublimated Lightweight Stretch Twill — \$50



**436792 | HYPER ELITE JERSEY**

**SIZES:** S, M, L, XL, 2XL  
\*15% upcharge for 3XL

Fully sublimated flat back mesh fabric with an engineered mesh back panel for a lightweight and breathable elite game jersey. V-neck design with a contrast neck trim option. Ability for team color customization on side panels and arm trim. Nike Team Sports jock tag at lower left hem. Options: +2" and +4" additional length. Body width: 20.75", Body length: 31.25" (size large). NFHS approved.

**FABRIC:** 100% polyester.



**436791 | HYPER ELITE SHORT**

**SIZES:** S, M, L, XL, 2XL  
\*15% upcharge for 3XL

System of dress elite fit. Fully sublimated stretch woven game short. Perforated side panels allow for ultimate breathability. Gripper elastic waistband with drawcord for adjustability. Embroidered Swoosh design trademark at left thigh. Options: +2" and +4" additional length. Hip width: 30" (size large), Inseam length: 11" (all sizes). NFHS approved.

**FABRIC:** 100% polyester.



**392917 NO LOOK GAME JERSEY**

**SIZES:** S, M, L, XL, 2XL  
\*15% upcharge for 3XL

Flat-back mesh V-neck game jersey with a tailored fit. Contrasting flat-back mesh taping and dazzle flat piping. Nike Team Sports jock tag on lower left hem. Options: +2" and +4" additional length. Body width: 20.75", Body length: 31.25" (size large). NFHS approved.

**FABRIC:** 100% polyester.



**392918 NO LOOK GAME SHORT**

**SIZES:** S, M, L, XL, 2XL  
\*15% upcharge for 3XL

Four-needle 2" exposed gripper elastic waistband with a drawcord. Contrasting flat-back mesh and taping with dazzle flat piping trim - allowing for extra customization on this short. Embroidered Swoosh design trademark at upper left hip. Options: +2" and +4" additional length. Hip width: 30" (size large), Inseam length: 11" (all sizes). NFHS approved.

**FABRIC:** 100% polyester.



287758 CAVALIER GAME JERSEY

**SIZES:** S, M, L, XL, 2XL  
\*25% upcharge for 3XL  
0.5" self-fabric armhole trim and 1.25" self-fabric neck with facing. Same or contrasting back shoulder inserts. Shoulder insert. Options: +2" and +4" additional length. Homeplate option is not available on this style. NFHS approved.  
**FABRIC:** White: 100% polyester. Colors: 100% nylon.

Flat-back mesh



CAVALIER GAME SHORT

**SIZES:** S, M, L, XL, 2XL  
\*25% upcharge for 3XL  
Four-needle 2" exposed gripper elastic waistband with a drawcord. Contrasting front and back curved side insert. Options: +2" and +4" additional length. Inseam: 11.25" (all sizes). NFHS approved.  
**FABRIC:** White: 100% polyester. Colors: 100% nylon.

287757 Flat-back mesh

326929 Two-ply flat-back mesh



Additional Cavalier Short options.





350801 | SPARTACUS GAME JERSEY

**SIZES:** S, M, L, XL, 2XL  
\*25% upcharge for 3XL

1.25" self-material neck with clean finished armhole. Contrasting back shoulder and side insert with a .375" contrasting shimmersheen overlay that is sewn on back and front of side insert. Home plate option is not available on this style. Options: +2" and +4" additional length. Body width: 20.75", Body length: 31.25" (size large). NFHS approved.

**FABRIC:** White: 100% polyester. Colors: 100% nylon.

Flat-back mesh



SPARTACUS GAME SHORT

**SIZES:** S, M, L, XL, 2XL  
\*25% upcharge for 3XL

Four-needle 2" exposed gripper elastic waistband with a drawcord. Contrasting top and bottom side insert with a .375" contrasting shimmersheen overlay on front and back of side inserts. Options: +2" and +4" additional length. Hip width: 30" (size large), Inseam length: 11" (all sizes). NFHS approved.

**FABRIC:** White: 100% polyester. Colors: 100% nylon.

350803 Flat-back mesh

350804 Two-ply flat-back mesh



436640 | L/S SHOOTING SHIRT

SIZES: S, M, L, XL, 2XL  
\*15% upcharge for 3XL

Flat back mesh long-sleeve shooting shirt. Rib knit trim at sleeve hem and neck collar. Contrast sleeve stripes for team color customization. Hidden snaps on front placket. Embroidered Swoosh design trademark at upper right chest. Nike Team Sports jock tag at lower left hem. Options: +2" and +4" additional length. Body width: 25", Body length: 31.25" (size large).

FABRIC: 100% polyester.



CUSTOM ELITE UNIFORM OPTIONS

COLOR OPTIONS



 Indicates color of Swoosh patch on fabric color. No options available.

FABRIC OPTIONS



NECK/CUFF TRIM OPTIONS

\*5/8" trim available on 11, 22, 22NE, 23E and 33E patterns only.





**584433 | NIKE HYPERDUNK 2013 TB \$140.00**

**SIZES:** 7-14, 15, 16, 17, 18 **OFFER DATE:** 9/1  
Revolutionary.  
**UPPER:** Superior.  
**MIDSOLE:** Lightweight.  
**OUTSOLE:** Innovative.

001 Black/Metallic Silver	100 White/Black-Metallic Silver
300 Gorge Green/Metallic Silver-Electric Green	400 Midnight Navy/Metallic Silver-Photo Blue
401 University Blue/Metallic Silver-Ice Blue	402 Game Royal/Metallic Silver-Blue Hero
500 Court Purple/Metallic Silver	600 Gym Red/Metallic Silver-Bright Crimson
601 Team Red/Metallic Silver-University Red	800 Brilliant Orange/Metallic Silver-Total Orange

NEW



**599582 | JORDAN AERO.FLY \$115.00**

**SIZES:** 7-14, 15, 16, 17, 18 **OFFER DATE:** 9/1  
High performance and style from the Jordan Brand.  
**UPPER:** Lightweight fuse upper construction with leather overlays around the tip and heel. Adaptive fit lacing system provides enhanced fit and lockdown.  
**MIDSOLE:** Lightweight injection Phylon midsole with forefoot Zoom Air unit. External shank for added stability.  
**OUTSOLE:** Solid rubber outsole for superior traction.

003 Black/White-Dark Grey-Cement Grey	004 Dark Grey/White-Cement Grey
006 Black/White-University Blue-Cement Grey	007 Black/White-Game Royal-University Blue
008 Black/White-Gym Red-Bright Crimson	015 Black/White-Midnight Navy-Cement Grey
030 Black/White-Gorge Green-Electric Green	103 White/Black-Dark Grey-Cement Grey

NEW zoom



**599263 | NIKE ZOOM SOLDIER VII TB \$125.00**

**SIZES:** 7-14, 15, 16, 17, 18 **OFFER DATE:** 9/1  
Designed for 3 time MVP LeBron James with the ultimate protection, responsiveness and containment features for the game's ultimate triple threat.  
**UPPER:** Hyperfuse upper for lightweight durability and breathability. Midfoot strap and inner bootie for lockdown and protective containment.  
**MIDSOLE:** Faceted Phylon midsole with heel and forefoot Zoom Air units for low to the ground responsiveness.  
**OUTSOLE:** Power flex outsole designed to not be overly flexible, allowing the player use of the entire foot as a lever for increased power on a leap.

001 Black/Metallic Silver-Matte Silver-White	100 White/Black-Metallic Silver
400 Game Royal/Metallic Silver-Blue Hero-White	401 Mid Navy/Metallic Silver-Photo Blue-White
600 Gym Red/Metallic Silver-Bright Crimson	

NEW zoom



**599420 | HYPER QUICKNESS TB \$105.00**

**SIZES:** 7-14, 15, 16, 17, 18 **OFFER DATE:** 9/1  
The hyperquickness is for the player looking for lightweight performance with durability and responsiveness as key benefits.  
**UPPER:** Hyperfuse upper for lightweight durability and breathability. Midfoot harness for excellent lockdown.  
**MIDSOLE:** Phylon midsole with high wrapping mid-foot rubber for lightweight durability. Forefoot Zoom Air unit for responsiveness.  
**OUTSOLE:** Solid rubber outsole with modified herringbone pattern for excellent durability.

001 Black/Metallic Silver-White	100 White/Black-Metallic Silver
300 Gorge Green/Metallic Silver-Electric Green	400 Midnight Navy/Metallic Silver-Photo Blue
401 Game Royal/Metallic Silver-White-Blue Hero	402 University Blue/Metallic Silver-Wht-Ice Blue
500 Court Purple/Metallic Silver-White-Volt	600 Gym Red/Metallic Silver-Wht-Bright Crimson
601 Team Red/Metallic Silver-White	800 Brilliant Orange/Metallic Silver-Total Orange

NEW zoom







### ELITE CHAMPIONSHIP AIRLOCK 8P

**SIZES:** 6, 7 **OFFER DATE:** C/O

Airlock Technology/ Holds exact air pressure over 85x longer than closest competition • Fully Adjustable / Adjust the air pressure exactly where you want it • Precision Feel / Consistent handle with precise, steady air pressure week after week • Game-Dry Composite Leather / Micro-perforated material helps keep sweat from collecting on the surface of the ball for a sure handle and ultra-soft touch all game long • Soft-touch woven microfiber backing/ Delivers a soft, indoor feel with deep-pebble grip • Wide channels/ Shooter-preferred wide channels help your fingers find a groove • Nike Elite basketballs preferred by over 250 major college programs • NFHS approved for high school play • Indoor use • NFHS approved.

<b>BB0495-801</b>	Amber/(Black-Platinum)	<b>Size 7</b>	<b>\$70.00</b>
<b>BB0496-801</b>	Amber/(Black-Platinum)	<b>Size 6</b>	<b>\$70.00</b>



### GAME TACK

**SIZES:** 5, 6, 7 **OFFER DATE:** C/O

77% Rubber/12% Nylon/11% Synthetic Leather - Non-Woven.

<b>BB0451-801</b>	Amber/(Black-Platinum)	<b>Size 7</b>	<b>\$20.00</b>
<b>BB0452-801</b>	Amber/(Black-Platinum)	<b>Size 6</b>	<b>\$20.00</b>
<b>BB0453-801</b>	Amber/(Black-Platinum)	<b>Size 5</b>	<b>\$20.00</b>



### ELITE TOURNAMENT 8-PANEL

**SIZES:** 7 **OFFER DATE:** C/O

Confident grip and feel / New deep-pebbled composite leather with Microfiber backing for soft feel and solid handle • Quicker shooting alignment / Wrap-around panels remove channel intersections for a quicker alignment on each shot • Better ball control / Wide channels help fingers find a groove for precise control • NFHS approved.

<b>BB0401-801</b>	Amber/(Black-Platinum)	<b>Size 7</b>	<b>\$45.00</b>
-------------------	------------------------	---------------	----------------



### ELITE CHAMPIONSHIP AUTOGRAPH 8-PANEL

**SIZES:** 7 **OFFER DATE:** 07/01/13

Smooth, white synthetic leather panels / maximum autograph space.

<b>BB0405-801</b>	Amber/White/(Black-Platinum)	<b>Size 7</b>	<b>\$25.00</b>
-------------------	------------------------------	---------------	----------------



### ELITE COMPETITION 8-PANEL

**SIZES:** 6, 7 **OFFER DATE:** C/O

Soft-touch, superb grip / Game-Dry composite leather is micro-perforated to keep the ball grippy and dry in your hand • Quicker shooting alignment / Wrap-around panels remove channel intersections for a quicker alignment on each shot • Better ball control / Wide channels help fingers find a groove for precise control • NFHS approved

<b>BB0446-801</b>	Amber/(Black-Platinum)	<b>Size 7</b>	<b>\$32.00</b>
<b>BB0445-801</b>	Amber/(Black-Platinum)	<b>Size 6</b>	<b>\$32.00</b>



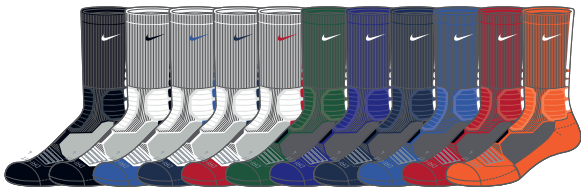
### BA4724 | NIKE HOOPS ELITE TEAM BACKPACK \$70.00

**SIZES:** MISC **OFFER DATE:** 07/01/13

Water resistant tarpaulin • Nike Max Air shoulder straps • Dual zippered main compartment • Padded back panel • Laptop sleeve fits 15" system

<b>001</b> Black/Black/(White)	<b>401</b> Midnight Navy/Black/(White)
<b>411</b> Game Royal/Black/(White)	<b>651</b> University Red/Black/(White)





**SX4801 NIKE HYPERELITE BASKETBALL CREW \$18.00**

**SIZES:** S, M, L, XL **OFFER DATE:** 09/01/13  
Sold in pre-packs of six.

Strategic, multi-density cushioning absorbs the impact where it counts • Dri-FIT fabric / wicks away moisture to help keep feet dry and cool • Midfoot compression fit / secure, stable design keeps socks and cushioning in place • Anatomical left and right / superior fit and cushioning • Reinforced heel and toe for enhanced durability

070	Black/White/(White)	101	White/Black/(Black)
143	White/Game Royal/(Game Royal)	144	White/Midnight Navy/(Midnight Navy)
160	White/Varsity Red/(Varsity Red)	393	Gorge Green/Gorge Green/(White)
424	Concord/Concord/(White)	440	Midnight Navy/Midnight Navy/(White)
441	Game Royal/White/(White)	661	Varsity Red/Varsity Red/(White)
881	Team Orange/Team Orange/(White)		

**NEW** DRI-FIT



**530977 AIR JORDAN DRI-FIT CREW \$16.00**

**SIZES:** S, M, L, XL **OFFER DATE:** 09/01/13  
Sold in pre-packs of six.

Engineered for performance athletes this Dri-FIT sock features articulated cushioning for shock absorption on key zones, extended rib atop forefoot for secure lockdown, l/r anatomical construction, re-enforced spandex rib for optimal fit. Jumpman design trademark at center back.

010	Black/Gym Red/(Gym Red)	012	Black/Matte Silver/(Matte Silver)
013	Black/Gorge Green/(Gorge Green)	021	Dark Grey/White/(White)
024	Black/Game Royal/(Game Royal)	100	White/Black/(Black)
474	Game Royal/White/(White)		

**NEW** DRI-FIT



**NIKE ELITE BASKETBALL SOCK \$14.00**

**SIZES:** MISC **OFFER DATE:** C/O

Midfoot Compression Fit-Secure stable design helps keep socks and cushioning in place • Footstrike Cushioning (patent pending) / New, clearly defined pattern is even more closely aligned to pressure patterns on a runners foot • Dri-FIT fabric / Wicks away moisture to help keep feet dry and cool • Anatomical left and right / Superior fit and cushioning

**FABRIC:** 62% polyester/21% nylon/15% cotton/2% spandex.

**SIZE:** XL sock = M 12-15 shoe size; L sock = M 8-12 shoe size, W 10-13 shoe size; M sock = M 6-8 shoe size, W 6-10 shoe size; S sock = 3Y-5Y shoe size.

SX3694-002	Black/Varsity Red/(Varsity Red)	X-LARGE (M12-15)	\$14.00
SX3694-004	Black/Game Royal/(Game Royal) <b>NEW</b>	X-LARGE (M12-15)	\$14.00
SX3694-007	Black/White/(White)	X-LARGE (M12-15)	\$14.00
SX3694-107	White/Black/(Black)	X-LARGE (M12-15)	\$14.00
SX3694-126	White/University Blue/(University Blue)	X-LARGE (M12-15)	\$14.00
SX3694-143	White/Game Royal/(Game Royal)	X-LARGE (M12-15)	\$14.00
SX3694-345	Gorge Green/White/(White)	X-LARGE (M12-15)	\$14.00
SX3694-401	Midnight Navy/White/(White)	X-LARGE (M12-15)	\$14.00
SX3694-441	Game Royal/White/(White)	X-LARGE (M12-15)	\$14.00
SX3694-601	Varsity Red/White/(White)	X-LARGE (M12-15)	\$14.00
SX3693-002	Black/Varsity Red/(Varsity Red)	LARGE (M8-12, W10-13)	\$14.00
SX3693-004	Black/Game Royal/(Game Royal) <b>NEW</b>	LARGE (M8-12, W10-13)	\$14.00
SX3693-007	Black/White/(White)	LARGE (M8-12, W10-13)	\$14.00
SX3693-102	White/Midnight Navy/(Midnight Navy)	LARGE (M8-12, W10-13)	\$14.00
SX3693-107	White/Black/(Black)	LARGE (M8-12, W10-13)	\$14.00
SX3693-126	White/University Blue/(University Blue)	LARGE (M8-12, W10-13)	\$14.00
SX3693-143	White/Game Royal/(Game Royal)	LARGE (M8-12, W10-13)	\$14.00
SX3693-160	White/Varsity Red/(Varsity Red)	LARGE (M8-12, W10-13)	\$14.00
SX3693-345	Gorge Green/White/(White)	LARGE (M8-12, W10-13)	\$14.00
SX3693-401	Midnight Navy/White/(White)	LARGE (M8-12, W10-13)	\$14.00
SX3693-441	Game Royal/White/(White)	LARGE (M8-12, W10-13)	\$14.00
SX3693-601	Varsity Red/White/(White)	LARGE (M8-12, W10-13)	\$14.00
SX3693-623	Deep Maroon/Deep Maroon/(White) <b>NEW</b>	LARGE (M8-12, W10-13)	\$14.00
SX3693-810	Team Orange/White/(White) <b>NEW</b>	LARGE (M8-12, W10-13)	\$14.00
SX3692-002	Black/Varsity Red/(Varsity Red)	MEDIUM (M6-8, W6-10)	\$14.00
SX3692-004	Black/Game Royal/(Game Royal) <b>NEW</b>	MEDIUM (M6-8, W6-10)	\$14.00
SX3692-007	Black/White/(White)	MEDIUM (M6-8, W6-10)	\$14.00
SX3692-102	White/Midnight Navy/(Midnight Navy)	MEDIUM (M6-8, W6-10)	\$14.00
SX3692-107	White/Black/(Black)	MEDIUM (M6-8, W6-10)	\$14.00
SX3692-126	White/University Blue/(University Blue)	MEDIUM (M6-8, W6-10)	\$14.00
SX3692-160	White/Varsity Red/(Varsity Red)	MEDIUM (M6-8, W6-10)	\$14.00
SX3692-345	Gorge Green/White/(White)	MEDIUM (M6-8, W6-10)	\$14.00
SX3692-401	Midnight Navy/White/(White)	MEDIUM (M6-8, W6-10)	\$14.00
SX3692-441	Game Royal/White/(White)	MEDIUM (M6-8, W6-10)	\$14.00
SX3692-601	Varsity Red/White/(White)	MEDIUM (M6-8, W6-10)	\$14.00
SX3692-623	Deep Maroon/Deep Maroon/(White) <b>NEW</b>	MEDIUM (M6-8, W6-10)	\$14.00
SX3692-810	Team Orange/White/(White) <b>NEW</b>	MEDIUM (M6-8, W6-10)	\$14.00
SX4586-007	Black/White/(White) <b>NEW</b>	SMALL (3Y-5Y)	\$14.00
SX4586-107	White/Black/(Black) <b>NEW</b>	SMALL (3Y-5Y)	\$14.00

DRI-FIT



**NIKE ELITE BASKETBALL KAY YOW CREW \$14.00**

Orders accepted in increments of 6 PPK units only

**SIZES:** MISC **OFFER DATE:** C/O

Strategic multi-density cushioning softens the impact where it counts • Dri-FIT fabric pulls away sweat to help keep you cool and comfortable • Supportive fit with arch compression • Left/Right specific design for a better fit • Reinforced heel and toe for enhanced durability

**SIZE:** L sock = M 8-12 shoe size, W 10-13 shoe size; M sock = M 6-8 shoe size, W 6-10 shoe size.

SX4513-066	Black/Pinkfire II/(Pinkfire II) <b>NEW</b>	LARGE (M8-12, W10-13)	\$14.00
SX4513-166	White/Pinkfire II/(Pinkfire II)	LARGE (M8-12, W10-13)	\$14.00
SX4513-611	Pinkfire II/White/(White)	LARGE (M8-12, W10-13)	\$14.00
SX4512-066	Black/Pinkfire II/(Pinkfire II) <b>NEW</b>	MEDIUM (M6-8, W6-10)	\$14.00
SX4512-166	White/Pinkfire II/(Pinkfire II)	MEDIUM (M6-8, W6-10)	\$14.00
SX4512-611	Pinkfire II/White/(White)	MEDIUM (M6-8, W6-10)	\$14.00

DRI-FIT



**ENGINEERED TO THE EXACT SPECIFICATIONS  
OF CHAMPIONSHIP ATHLETES**



**NIKETEAM.COM**

